

Prepared by:  
City of Spearfish  
625 Fifth Street  
Spearfish, SD 57783  
605-642-1333

**RESOLUTION 2011-25**

**ADOPTION OF THE  
SPEARFISH AREA MASTER TRANSPORTATION PLAN  
INCLUDING A MAJOR STREET PLAN and 3-MILE EXTRATERRITORIAL PLATTING  
JURISDICTION**

**WHEREAS**, the City of Spearfish, South Dakota recognizes the need for a transportation master plan that will guide decision making for the improvement of the existing transportation system, as well as identify new elements of the transportation system to be developed in the future.

**WHEREAS**, SDCL 11-6-26 requires the City of Spearfish to adopt a Major Streets Plan, and record a copy of such plan with the County Register of Deeds. This requirement enables the City to govern the subdivision platting of lands outside of city limits, up to three miles in order to implement a coordinated street network.

**WHEREAS**, The City of Spearfish Major Street Plan, as attached in Exhibit A, represents the future growth areas of the City and the street network intended to serve it. Exhibit B illustrates the three mile platting jurisdiction and has been approved by Lawrence County Commissioners in Resolution 2011-25, and the City of Spearfish wishes to join in that approval.

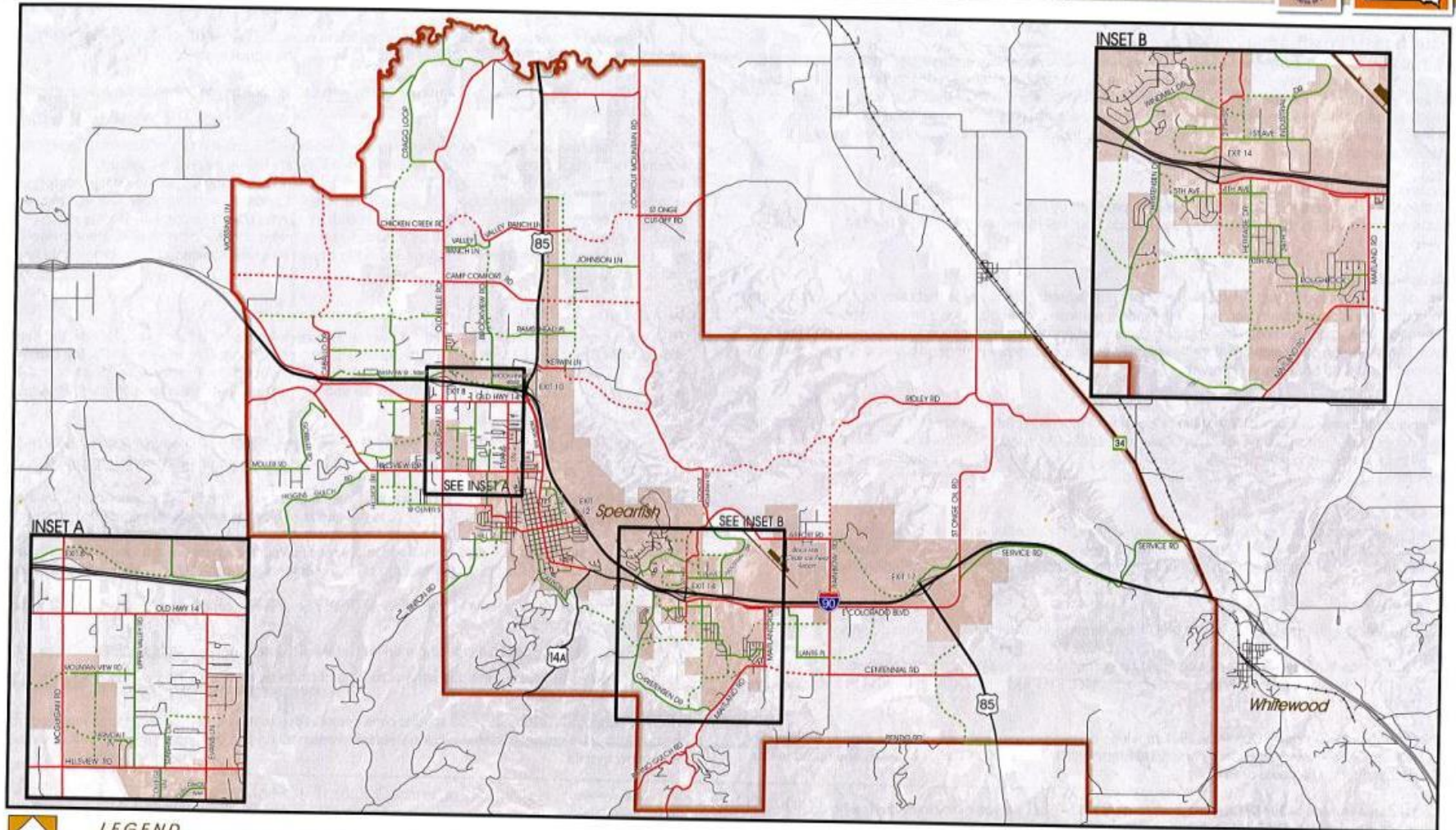
**NOW THEREFORE BE IT RESOLVED** that we, the assembled members of the Common Council of the City of Spearfish do hereby adopt Spearfish Area Transportation Master Plan/moveSpearfish and the Major Street Plan (Exhibit A, Attached) as the City's official transportation policy document, and the Three Mile Extra Territorial Platting map (Exhibit B, Attached)

Adopted this 17<sup>th</sup> day of October 2011.

\_\_\_\_\_  
Jerry A. Krambeck, Mayor

ATTEST: \_\_\_\_\_  
David H. Dutton, Finance Officer

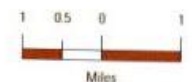
Adopted:  
Published:  
Effective Date:



**LEGEND**

	Study Area	Arterial	Collector	Local Roads	City Boundary
State Highway	Proposed Arterial	Proposed Collector	Proposed Local		

\*Source: Functional Classification provided by Lawrence County and modified by FHU



**EXHIBIT A**

Please note, the above map is an excerpt from the overall plan, which may be viewed in its entirety in the City of Spearfish Public Works office located at 625 Fifth Street, Spearfish SD.

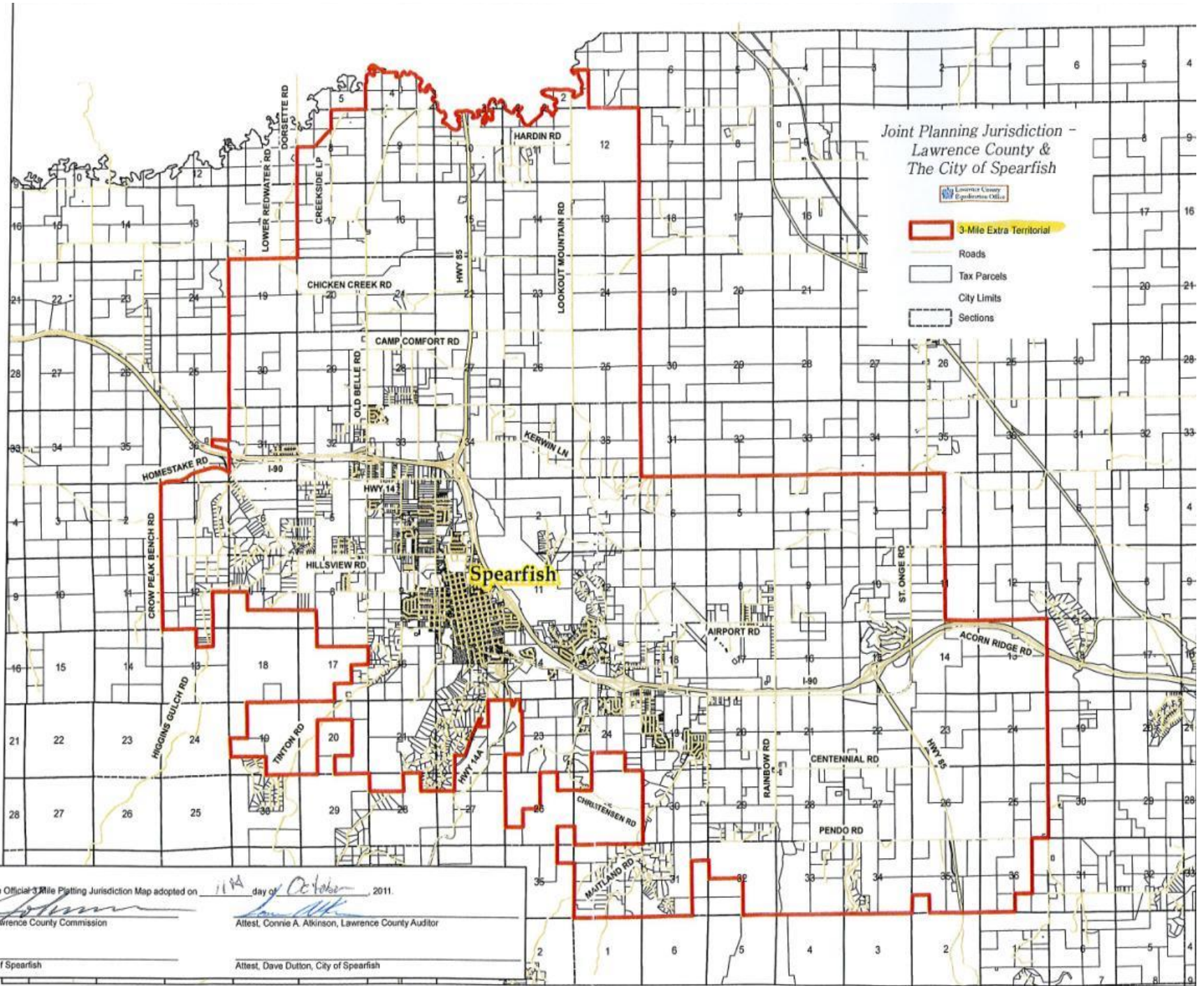


EXHIBIT B